



EARLY SCHOOL LEAVING AND DROP OUT IN KOSOVO

ERI SEE Regional Conference
11-12 December 2013
Belgrade, SERBIA

Dukagjin Pupovci
Kosovo Education Center



Basic facts

- 1,120 primary and secondary schools
- 392,000 students (20% of the population)
- 23,000 teachers
- Languages of instruction: Albanian, Serbian, Bosnian, Turkish.



Data Sources

- Statistical Agency of Kosovo
 - Annual social statistics
 - Population Census
- Ministry of Education, Science and Technology
 - Annual statistics
 - Education Indicators 2009-2012
 - Progress reports
- Various studies and reports



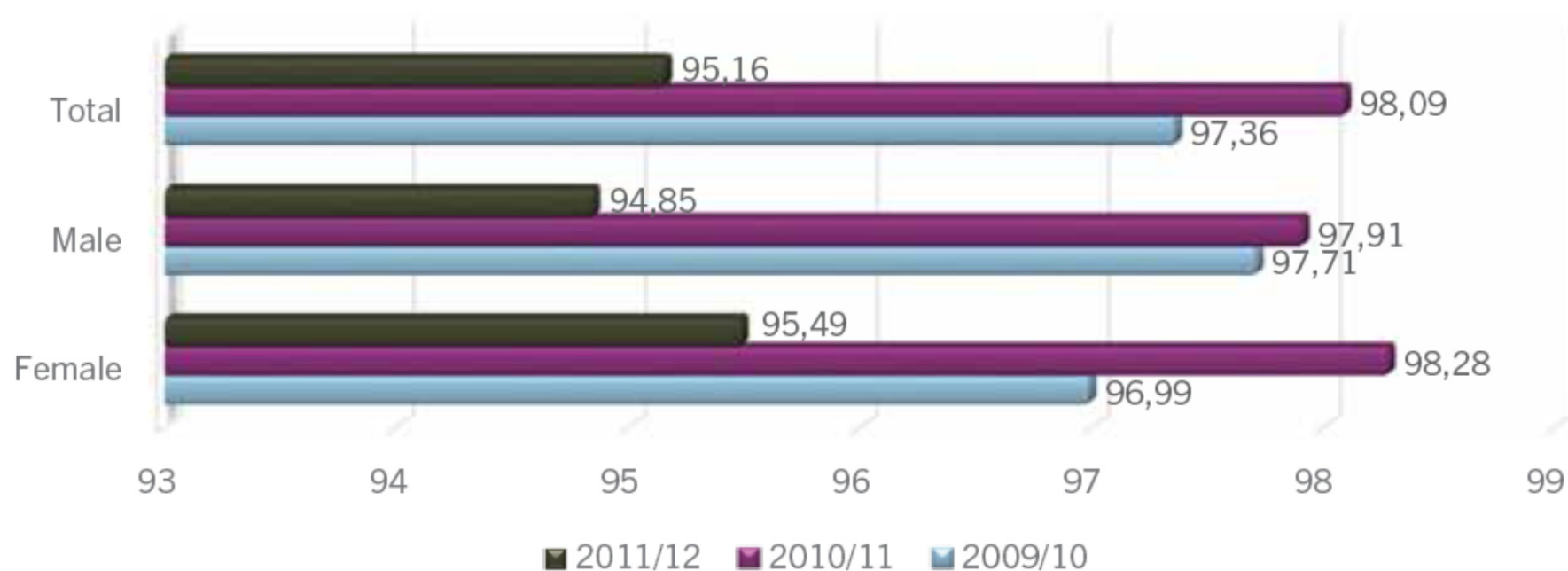
Constrains

- EMIS operates since 2002, but there is no functioning student tracking system
 - School drop outs not consistently reported
 - School drop outs often confused with transfer to other schools including emigration from the country
- Data on Serbian schools is not available



Participation

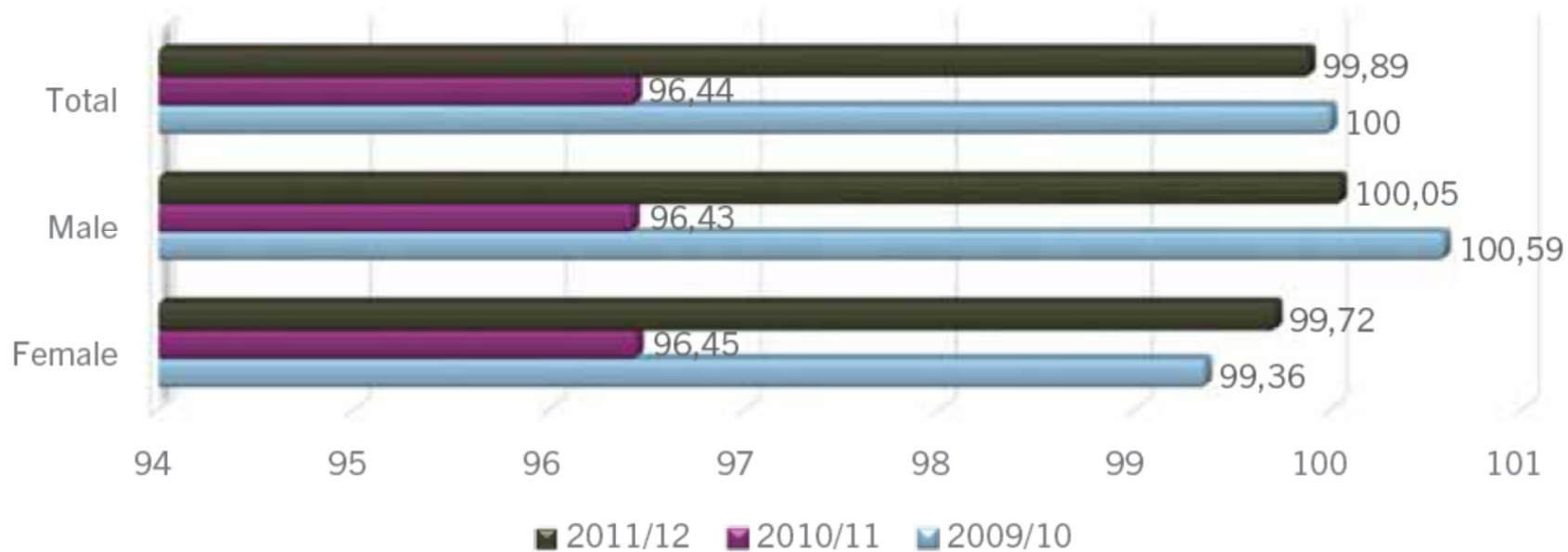
Gross Enrollment Ratio in Primary Education (grades 1-5)





Participation

Gross Enrollment Ratio in Lower Secondary Education (grades 6-9)





Participation

Survival Rate by Grade in Lower Secondary Education (grades 6-9)

| | 2010/11 | 2011/12 | 2012/13 |
|------------|----------------|----------------|----------------|
| gr. 6 to 7 | 97.4 | 99.0 | 99.5 |
| gr. 7 to 8 | 96.6 | 99.1 | 98.5 |
| gr. 8 to 9 | 95.7 | 97.9 | 97.7 |



Participation

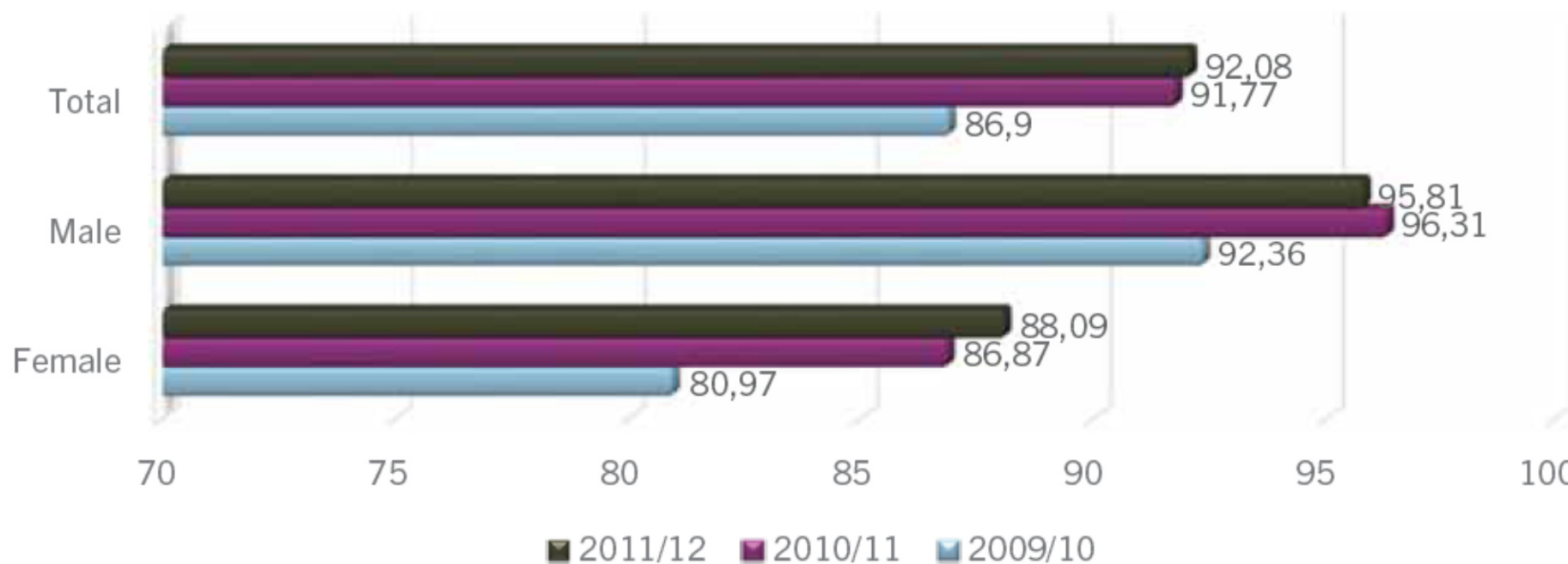
27. Transition Rate from Lower Secondary to Upper Secondary Education

| | 2009/10 | 2010/11 | 2011/12 |
|--------|----------------|----------------|----------------|
| Female | | 84.1 | 84.9 |
| Male | | 94.7 | 96.8 |
| Total | 91.0 | 89.6 | 91.0 |



Participation

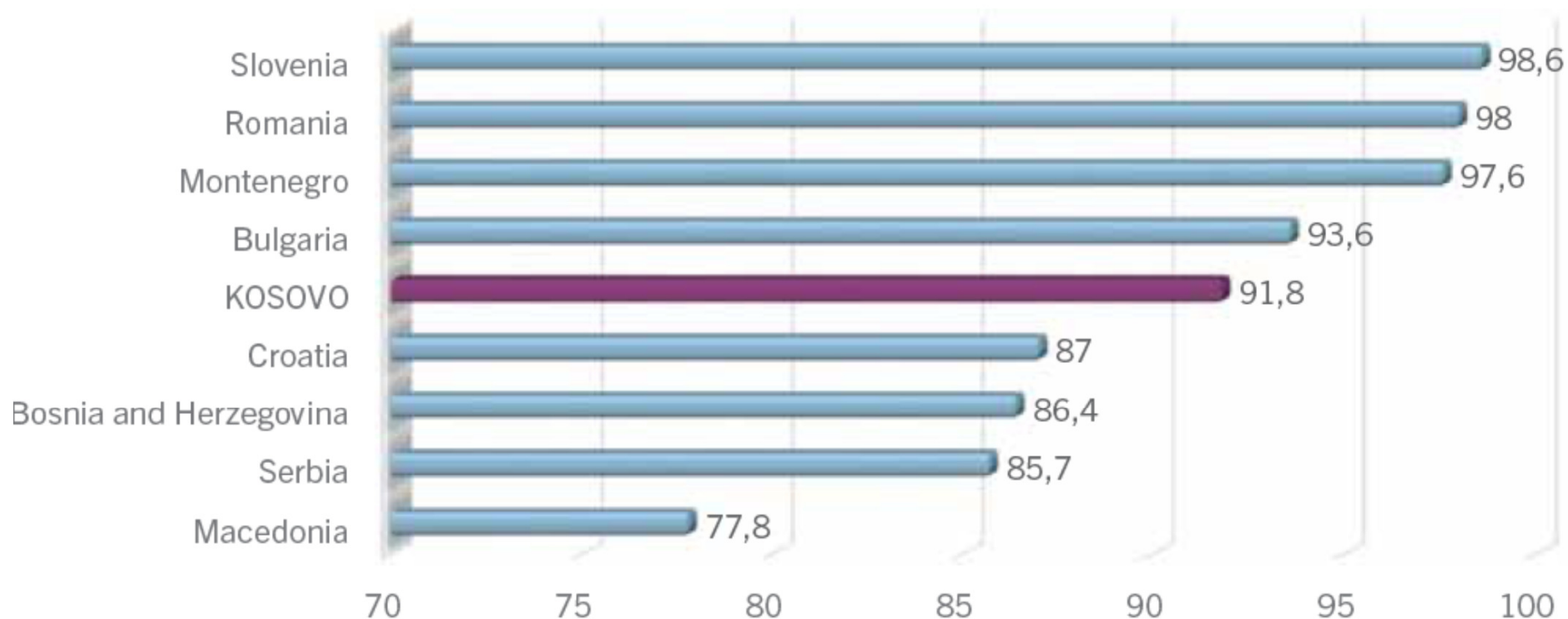
Gross Enrollment Ratio Upper Secondary Education (grades 10-12)²





Participation

Gross Enrollment Ratio in Upper Secondary Educational – Regional comparison, 2011





Participation

Survival Rate by Grade in Upper Secondary Education (grades 10-12)

| | 2010/11 | 2011/12 | 2012/13 |
|--------------|----------------|----------------|----------------|
| gr. 9 to 10 | 89.6 | 91.0 | 94.3 |
| gr. 10 to 11 | 89.2 | 89.1 | 92.0 |
| gr. 11 to 12 | 95.6 | 93.7 | 94.2 |



Participation

| Education level | Kosovo | RAE |
|----------------------------------|--------------|--------------|
| Primary & Lower secondary (6-14) | <i>97%</i> | <i>80.2%</i> |
| Upper Secondary (15-18) | <i>91.8%</i> | <i>22.7%</i> |



Drop outs from Compulsory Education (grades 1-9)

| School year | Drop outs | Male | Female |
|-------------|--------------|-----------|------------|
| 2009/10 | 1,920 (0.6%) | 942 (49%) | 978 (51%) |
| 2010/11 | 1,485 (0.5%) | 767 (52%) | 718 (48%) |
| 2011/12 | 1,339 (0.5%) | 695 (52%) | 644 (48 %) |



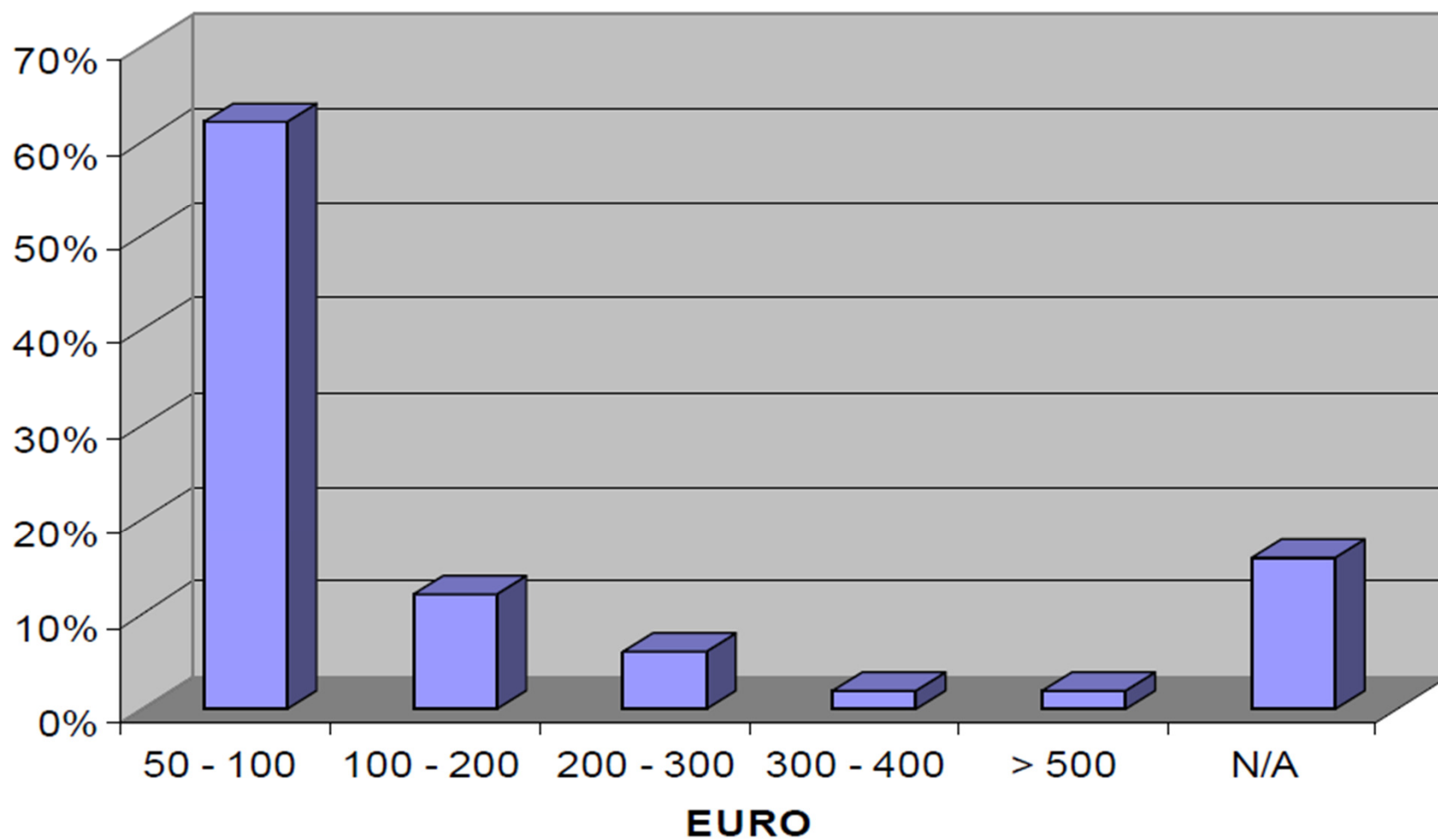
Drop outs from Upp. Secondary Education (grades 10-12)

| School year | Drop outs | Male | Female |
|--------------------|------------------|-------------|---------------|
| 2009/10 | 3,208 (3.1%) | 2,212 (69%) | 996 (31%) |
| 2010/11 | 3,135 (2.9%) | 2,259 (72%) | 876 (28%) |
| 2011/12 | 2,642 (2.5%) | 1,877 (71%) | 765 (29%) |



Profile of drop outs (Survey, 2009)

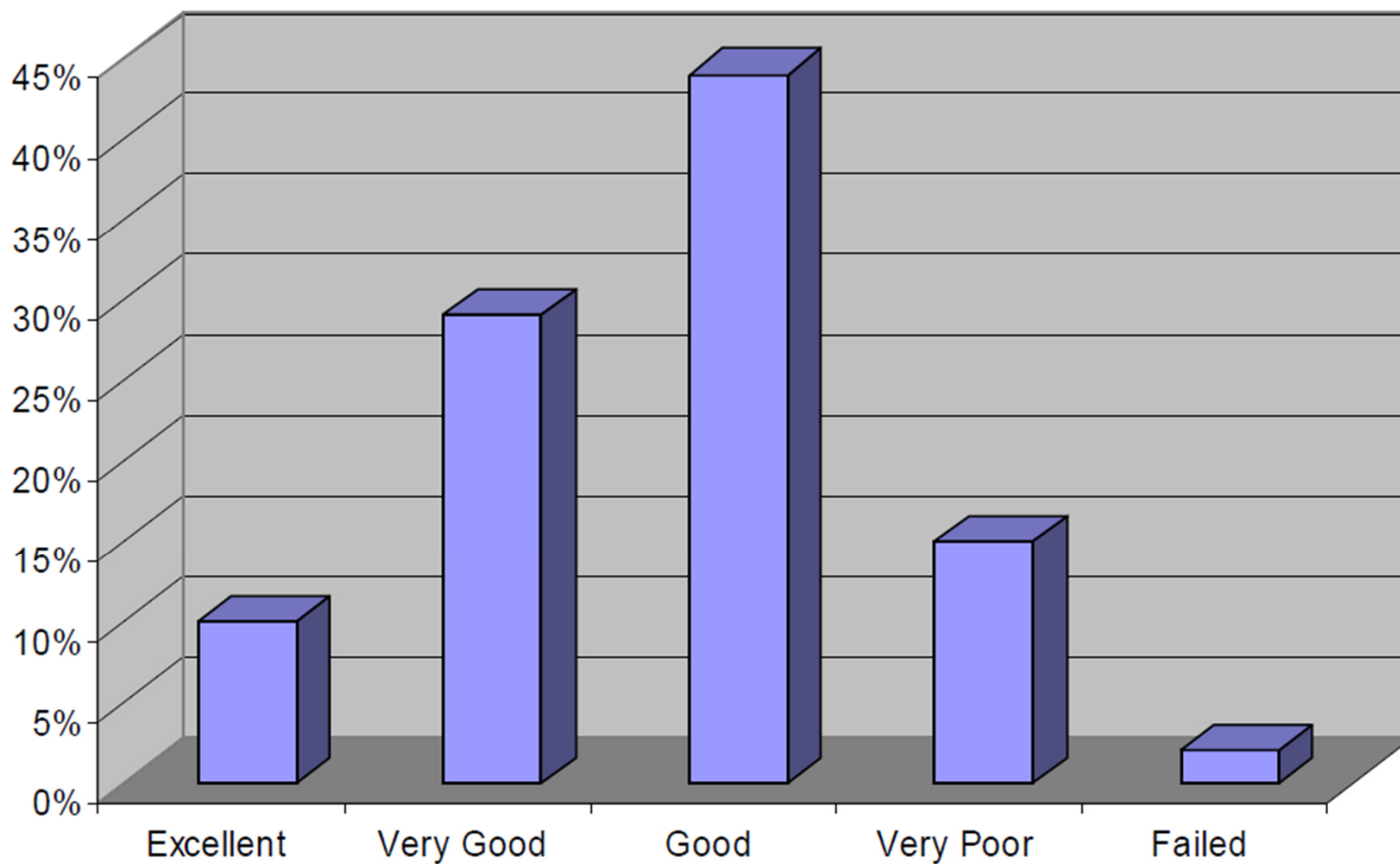
Family Income





Profile of drop outs (Survey, 2009)

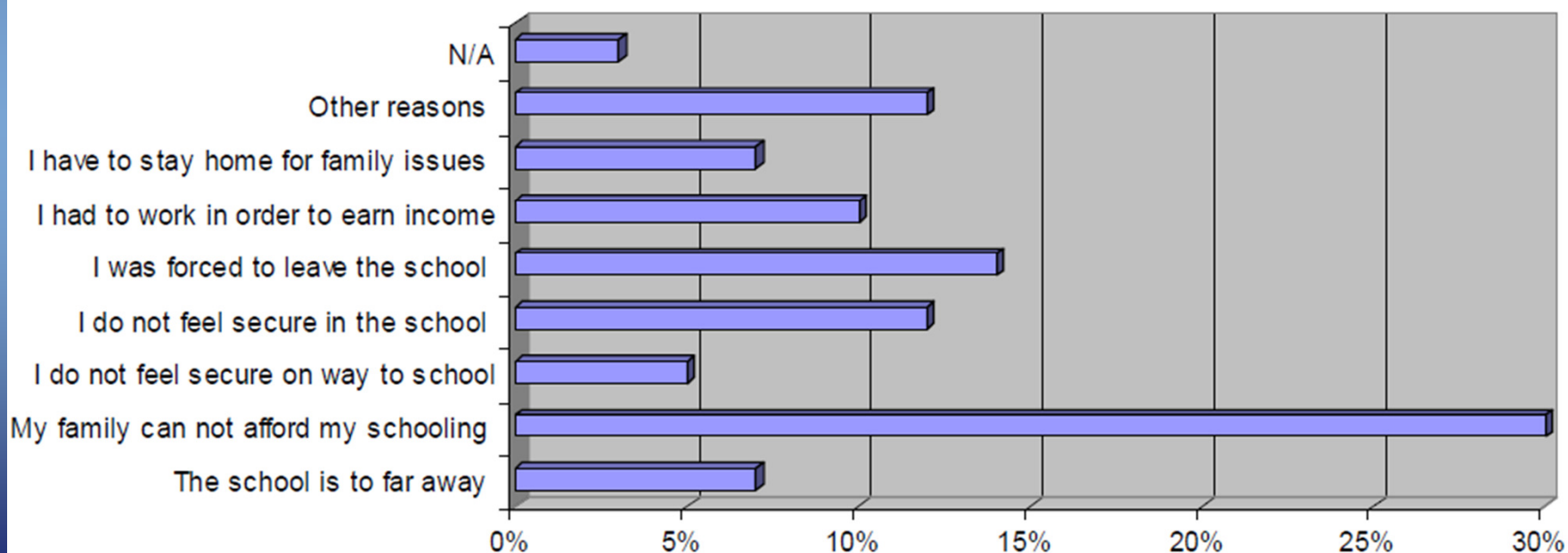
Level of Achievement





Profile of drop outs (Survey, 2009)

Main reasons for Dropout





Law on Pre-University Education 2011

- Definition of the School Drop out - premature withdrawal from compulsory education.
- Preventing drop out remains one of the responsibilities of the MEST within a decentralized system
- Municipalities must provide transportation for all pupils living 4 km away from the school
- Textbooks to students aged 6-15 are provided free of charge



KESP 2011-2016

- National Strategic Plan for Prevention of drop outs 2009-2014
- RAE Integration Strategy 2009-2015
- Collecting data about drop-outs
- Bylaw for drop out prevention teams
- Offering second chance education to drop outs
- Cross-sector cooperation still a challenge



Municipal and school-based initiatives

- Teams for preventing drop outs in schools established
- Teams operate based on manuals developed in cooperation with CRS
- Teams have received training to deal with drop outs
- Cooperation with grassroots CSOs, particularly those serving RAE communities



Major interventions

- Education Participation Improvement Project (EPIP) 2003-2009
- Project supporting integration of RAE communities
- Second chance education
- Preventing school drop-outs (CRS)
- Studies of drop-outs funded by GiZ and UNICEF



Recommendations

- Provide free textbooks and school supplies to students in need
- Provide free transportation to students living outside school catchment areas
- Improve cooperation with CSOs – support community-based initiatives to ensure participation in education
- Report drop-outs and engage other government sectors in addressing their concerns and limitations
- Provide scholarships to secondary students in need
- Facilitate mobility in secondary education
- Consider introducing conditional cash transfers to improve participation



THANK YOU!

